

**amphion®** enjoy



beautifully honest

amphion



Over 25 years  
of expertise &  
dedication

Sound is one of the most beautiful and exciting aspects of human life. Trying to understand it is a lifelong journey. How things sound is naturally important, but the main question we continue to ask is: 'How does it make us feel?'

# Handmade in Finland



## Endurance through quality

Longevity and sustainability are deeply ingrained in the Finnish culture. We design and build our loudspeakers surrounded by beautiful nature. The synergy of expertise, craftsmanship, and high-quality materials lead to long-lasting, durable products.



## Mark of origin

Amphion Loudspeakers Ltd. is awarded the right to use the Association of Finnish Work's key Flag Symbol mark of origin. This mark is granted to Finland-based organizations that manufacture their products in Finland, having a minimum domestic content of 50 percent.



## Warranty

Amphion Loudspeakers come with a five-year warranty against defects in materials and workmanship. For both warranty or out-of-warranty service, please contact your original place of purchase for assistance and instructions.







Breathtaking sound  
with deep  
emotional impact

Every Amphion  
model delivers



#### Point-source sound

Lowering the crossover point allows the speakers to operate in point-source manner. This leads to industry leading phase coherence and pinpoint imaging.



#### Room-wide sweet spot

Thanks to even dispersion, enjoyment is not limited to a single seat. Everyone in the room can share the experience equally.



#### Time aligned drivers

Timing properties between the various drivers are improved as the waveguide aligns the voice coils of the tweeter and the midwoofer.



#### Unrivalled midrange clarity

Exceptional naturalness and purity makes listening a joy. The nuances of human voice and instruments are presented in their full glory.



#### Low volume, high intensity

Easy to place and well-performing even under challenging acoustics. Clear and memorable even on lower listening volumes.



#### Less is more

Pushing the acoustics leads to electrical simplicity. Advanced acoustic engineering simplifies the signal path, which increases resolution and transparency.



# Why is the Amphion proprietary waveguide important?

Direct-from-the-speaker sounds are always combined with room reflections. Well-executed, controlled dispersion ensures that also the off-axis (reflected) sounds have a correct balance. This results in a more controlled and predictable performance in different rooms and speaker placements. This is especially important in rooms which are acoustically hard and reflective such as concrete walls and stone floors.

Traditionally, waveguides have been used to make the tweeters more directional ie. to make them more beam-like. Amphion, being a frontrunner in waveguides, applies this technology differently. Our proprietary 5th generation U/D/D (Uniformly Directive Diffusion) waveguide achieves wide, even dispersion throughout the frequency band. In addition to allowing the speakers to perform better in all rooms - a large, room-filling, listening area means enjoyment is not limited to a single seat.



## Passive Radiator Technology

Argon 3X | 3LX | 7LX utilize the passive radiator technology developed originally for Amphion's professional line. Passive radiators offer a number of performance benefits over traditional vented cabinets.

**Better quality bass:** Passive radiators remove the harmful sonic signature always present with reflex loading. Due to a lack of control the reflex port adds a "tail" to the original signal, which smears particularly the upper bass and the lower midrange. When properly executed, passive radiators produce the ideal, quick, controlled "start-stop" type of bass, and improve the clarity in the lower mids.

**Increased midrange purity:** In addition to better quality bass, the midrange purity is increased. A driver situated in a reflex cabinet is exposed to "disturbance" ie. air turbulence and pressure changes caused by air moving in and out of the reflex tube. In a closed passive reflex cabinet, the internal environment of the enclosure is better controlled, which optimizes woofer performance.

**More natural energy transfer:** Sound is not a mere frequency curve, it is transfer of energy from sound source to the listener. Passive radiators load the room more evenly and ensure a more natural and emotionally involving energy transfer.

Please Note: As radiators load the room somewhat differently, optimal placement can differ from what you are used to with your vented speaker. In case of bass issues, experiment with the speaker placement – passive radiators tend to allow closer to the wall placements than their vented counterparts.



Powerful  
precision





# Argon

Argon's sonic signature is what we hear live - nothing more, nothing less.

Goal is to create a loudspeaker that enables you to experience sound in a more intimate, and emotionally resonant way - even from the recordings you thought you knew by heart.



### Variations

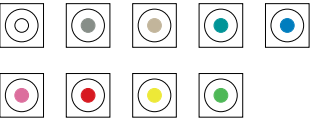
Finish



Veneer



Colour grids



### Technical specifications

Operating principle
Drivers
Crossover point
Impedance
Sensitivity
Frequency response
Power recommendation
Measurements
Weight



Argon1	Argon3X	Argon3LX	Argon7LX	Argon5C
Reference-quality bookshelf loudspeaker.	Enjoy studio quality sound at home.	Studio quality with added weight of a floorstander.	Breathtaking sound with deep emotional impact.	Centre speaker designed to work with all Argon models.

Two-way, vented	Two-way, passive radiator	Two-way, passive radiator	Two-way, passive radiator	Two-way, vented
1" titanium tweeter 5¼" aluminum woofer	1" titanium tweeter 6½" aluminum woofer	1"titanium tweeter 6½" aluminum woofer	1" titanium tweeter 2x 6½" aluminum woofer	1" titanium tweeter 2 x 5¼" aluminum woofer
1600 Hz	1600 Hz	1600 Hz	1600 Hz	1600 Hz
8 Ω	8 Ω	8 Ω	4 Ω	4 Ω
86 dB	87 dB	86 dB	91 dB	90 dB
45 – 25 000 Hz -6dB	38 - 55 000 Hz - 6dB	30 - 55 000 Hz - 6dB	28 – 55 000 Hz -6dB	46 – 25 000 Hz -6dB
25 – 150 W	50 – 250 W	50 – 250 W	50 – 250 W	25 – 150 W
316 x 160 x 265 mm	380 x 191 x 305 mm	995 x 234 x 344 mm	1157 x 234 x 344 mm	452 x 160 x 265 mm
7 kg (15 lbs)	10 kg (22 lbs)	23 kg (51 lbs)	27 kg (60 lbs)	10 kg (22 lbs)



# Decorate with sound

Pure sound should be part of everyday life. The perfect home looks, sounds, and feels perfect. In order to achieve this, loudspeakers must become part of the home interior.



## Cabinet colour variations



Full white



Standard white



Black



Walnut



Black



Stone grey



Beige brown



Turquoise blue



Sky blue



Heather violet



Traffic red



Sulfur yellow



Yellow green

## Grid & Cabinet colour variations

Amphion loudspeakers are available with a wide range of grid colour options, which can be swapped to a new colour when your interior changes.

The RAL colour-matching system is used in the EU and by Amphion. Certain venues, apartments, homes or settings may require special colour-coordination, which is available for a reasonable surcharge. There are 213 RAL-colours, each with a 4 Digit number (eg. RAL-7035).





A dream  
worth  
pursuing



# Krypton3X

Krypton is Amphion's reference project 25 years in the making. This highly innovative and unique three-way reference loudspeaker allows you to enjoy full range, realistic orchestral performances without owning a concert hall.

Krypton's 8" midwoofers are isolated from the rest of the cabinet in perforated, cardioid chambers. This creates a cardioid-shaped dispersion pattern, which radically reduces the midrange reflections and ensures the highest level of performance, even in less-than-optimal listening environments.





8” mid-woofers combine delicate midrange magic with a supreme slam. The combined cone area of the tweeter and two 8” midrange units is 950cm<sup>2</sup> – up to 7x more than in competing products.

Variations

Finish



Directivity plot 101-14050 Hz

- 101 hz

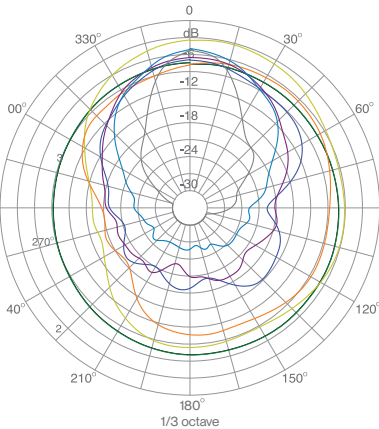
359 hz

507 hz

1000 hz
- 2000 hz

7551 hz

14050 hz



Technical specifications

Operational principle	Three-way, vented
Drivers	1” titanium tweeter 2 x 8” papyrus midrange 10” aluminium woofer
Crossover point	160 Hz / 1600 Hz
Impedance	4 Ω
Sensitivity	89 dB
Frequency response	21 – 55.000 Hz -3dB
Power recommendation	100 – 300 W
Measurements	1370 x 330 x 480 mm
Weight	70 kg / 154 lbs





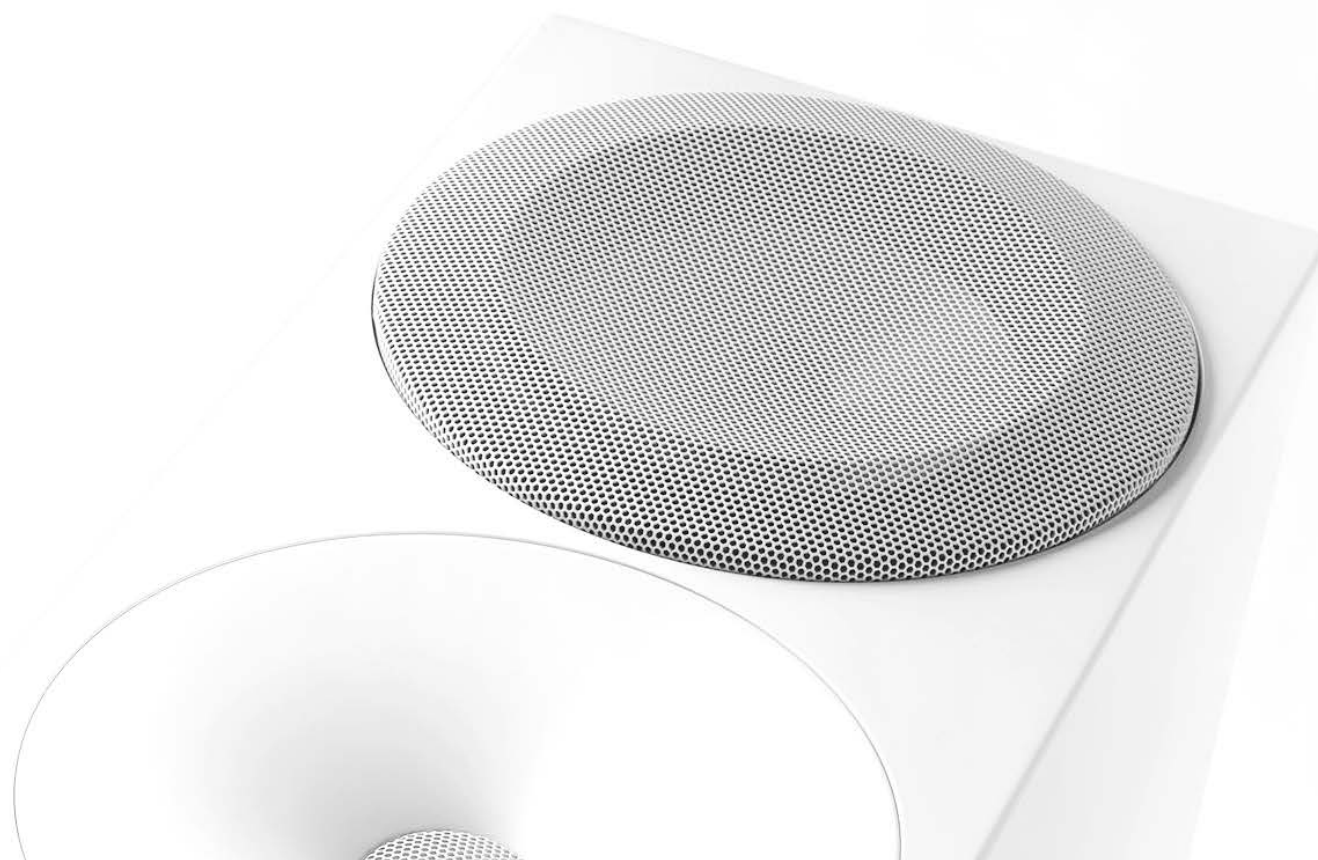
# Beautifully immersive



An immersive environment sets new demands for loudspeakers. Precise imaging, defined depth information and immaculate phase behaviour are needed to enjoy clearly defined objects in the spatial field. As the number of channels grows, even the smallest shortcomings can lead to a lack of cohesion. Amphion's unique acoustic design ensures an exquisite, three-dimensional, reference-quality soundscape and industry-leading immersion.



**amphion®** enjoy



**[www.amphion.fi](http://www.amphion.fi)**

**Factory & Headquarters**

Telkkistentie 2  
70460 Kuopio, Finland  
Tel. +358 17 2882 100  
[info@amphion.fi](mailto:info@amphion.fi)

**Asia-Pacific | Subcontinent | Middle East**

Ariake Frontier Bldg 9F Tower B,  
3-7-26 Ariake Koto-ku Tokyo 135-0063 JAPAN  
+81 80 3732 9014 (Japan)  
[asiapacific@amphion.fi](mailto:asiapacific@amphion.fi)